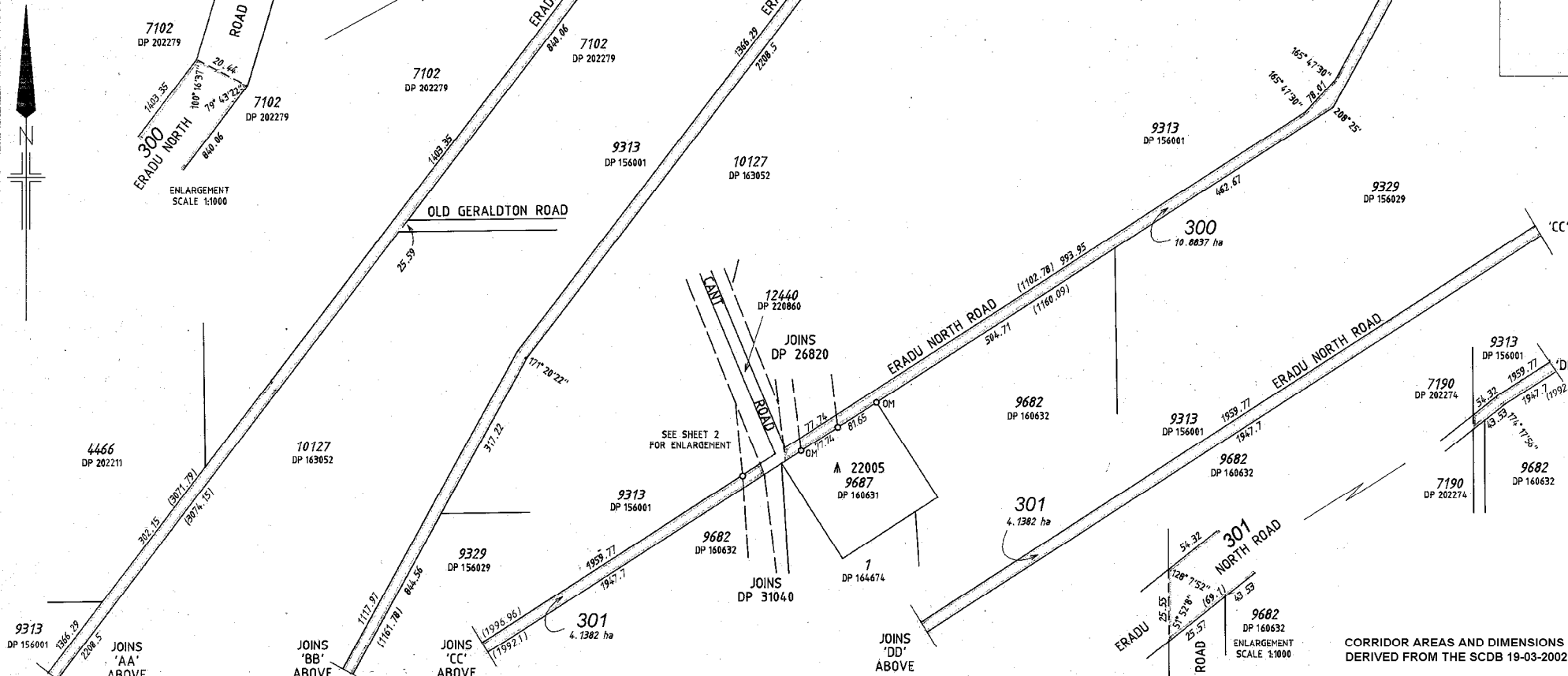


| VER. | AMENDMENT | AUTHORISED BY | DATE |
|------|-----------|---------------|------|
| | | | |

'AA' FOR INTERESTS AND NOTIFICATIONS SEE SHEET 2

| LOT | FORMER TENURE | ON PLAN/DIA | TITLE |
|-----|---------------|-------------|-------------|
| 300 | ROAD | DP 215536 | LR 3103/725 |
| 301 | ROAD | | |



CORRIDOR AREAS AND DIMENSIONS DERIVED FROM THE SCDB 19-03-2002

TYPE CROWN
 PURPOSE SUBDIVISION
 PLAN OF LOTS 300 AND 301 (DEDICATED ROAD) AND CORRIDOR
 DISTRICT VICTORIA FILE 000543-1998/05
 TOWNSITE 87233
 LOCAL AUTHORITY SHIRE OF MULLEWA
 LOCALITY

FORMER TENURE
 SEE TABLE
 INDEX
 SURVEYOR'S CERTIFICATE - REG 54
 I hereby certify that this plan is accurate and is a correct representation of the:
 (a) survey and/or
 (b) calculations from measurements. (Delete if applicable)
 undertaken for the purpose of this plan and true & correct, and that I retain written notes in relation to which it is lodged.
 Licensed Surveyor Date
 SURVEY FIRM

LOGGED
 DATE
 TYPE OF VALIDATION
 FULL AUDIT
 LEGAL COMPONENT
 DOCKET
 CERTIFIED CORRECT
 I.S.C.
 F.S.C.
 APPROVED BY
 WESTERN AUSTRALIAN PLANNING COMMISSION
 FILE
 EXEMPT FROM W.A.P.C. APPROVAL
 Delegated Under S.46 P.3 of Act 2465
 DATE

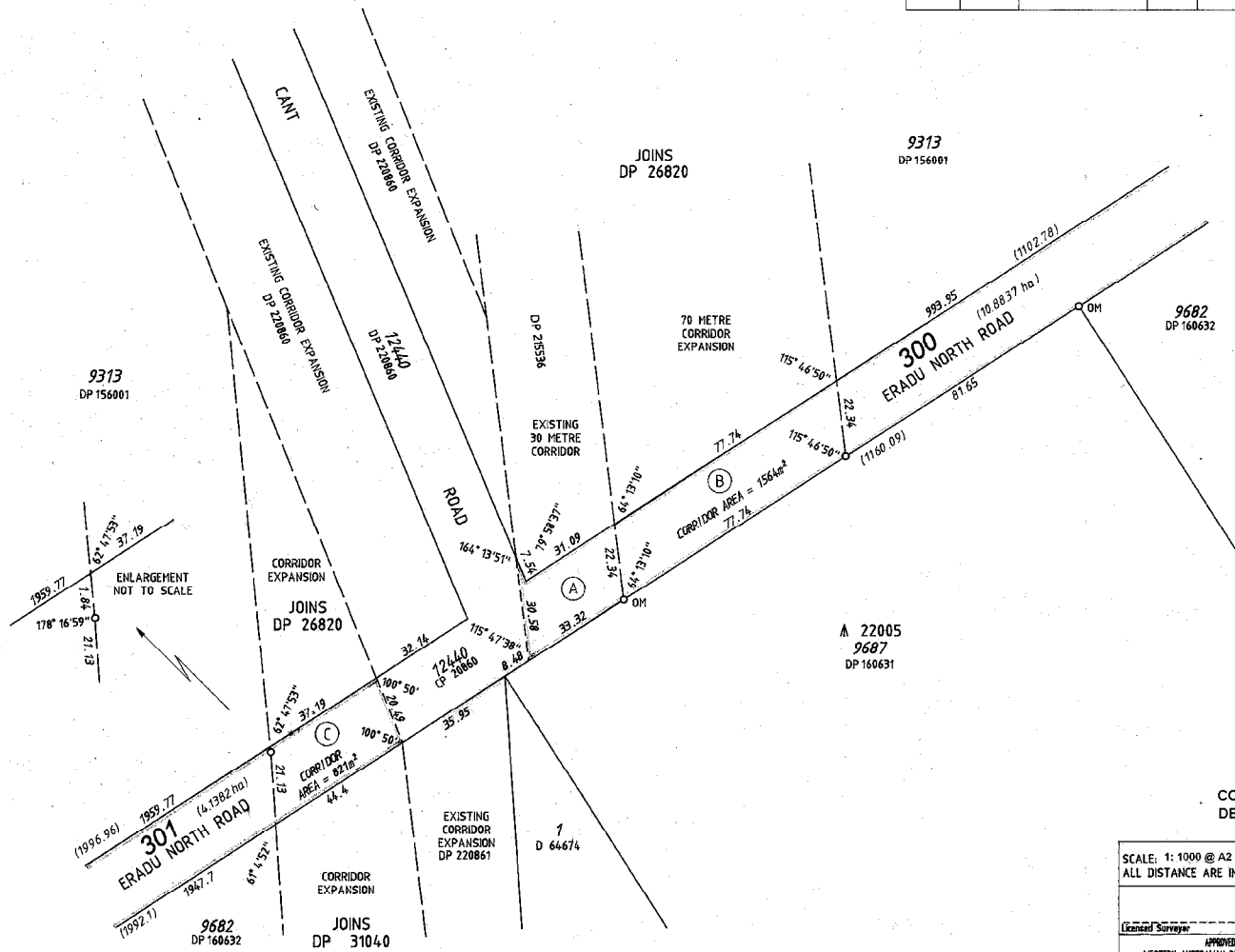
IN ORDER FOR DEALINGS:
 SUBJECT TO
 APPROVED BY
 FOR INSPECTOR OF PLANS & SURVEYS / AUTHORIZED LAND OFFICER DATE
 APPROVED REG 21(1)
 INSPECTOR OF PLANS & SURVEYS / AUTHORIZED LAND OFFICER DATE

Landgate
 Western Australian Land Information Authority
DEPOSITED PLAN
EXAMPLE 62.1
 SHEET 1 OF 2
 VERSION 1

FOR HEADING SEE SHEET 1

INTERESTS AND NOTIFICATIONS

| SUBJECT | PURPOSE | STATUTORY REFERENCE | ORIGIN | LAND BURDENED | BENEFIT TO | COMMENTS |
|---------|-------------------|--------------------------------------|--------------|---------------|--------------------------------|----------|
| (A) | PIPELINE CORRIDOR | DAMPIER TO BUNBURY PIPELINE ACT 1997 | DOC H 347484 | LOT 300 | THE DBNGP LAND ACCESS MINISTER | |
| (B) | PIPELINE CORRIDOR | DAMPIER TO BUNBURY PIPELINE ACT 1997 | THIS PLAN | LOT 300 | THE DBNGP LAND ACCESS MINISTER | |
| (C) | PIPELINE CORRIDOR | DAMPIER TO BUNBURY PIPELINE ACT 1997 | THIS PLAN | LOT 301 | THE DBNGP LAND ACCESS MINISTER | |



CORRIDOR AREAS AND DIMENSIONS DERIVED FROM THE SCDB 19-03-2002

SCALE: 1: 1000 @ A2
ALL DISTANCE ARE IN METRES

Licensed Surveyor: _____ Date: _____
 APPROVED BY: _____
 WESTERN AUSTRALIAN PLANNING COMMISSION
 FILE EXEMPT FROM W.A.P.C. APPROVAL
 Delegated Under S. 10 P & D Act 2005

Landgate
 Western Australian Land Information Authority

DEPOSITED PLAN
EXAMPLE 62.2

DATE: _____
 SHEET 2 OF 2
 VERSION: 1