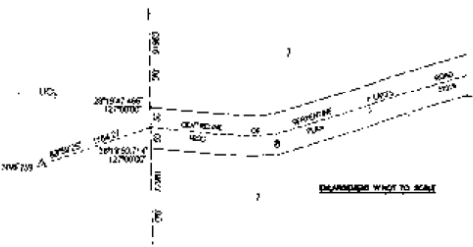
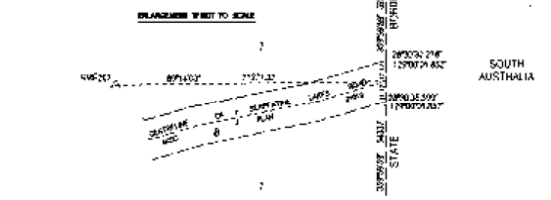
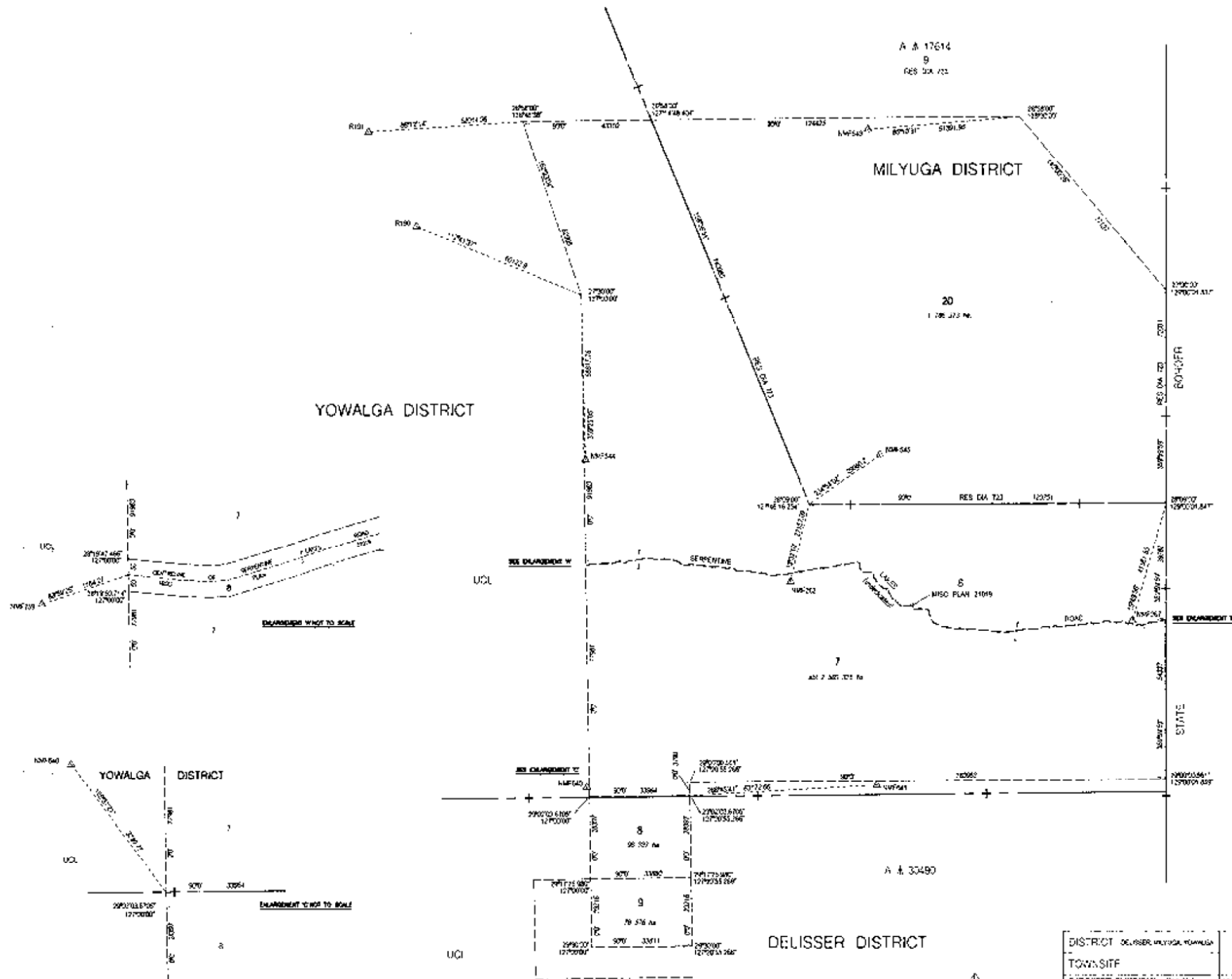


AMENDMENTS



- NOTES**
- LAA Reg 21(1) - Boundaries are completely unmarked. Corners are defined by the stated geographical coordinates and geocentric connections.
 - Geographic coordinates are expressed in the following form:
Latitude (south) eg 35°04'00"
Longitude (east) eg 128°30'00"
 - Computed geographical coordinates and geocentric connections derived using DOLA's USGSAK software - (ref to GS Book 1973/8)
 - Geoid used: Australian Geoid Datum 1984 (AGD84)
 - Reference spheroid: Australian National Spheroid (ANS)
 - Boundaries and geocentric connections expressed as (sphere) distances and inclinations.
 - South border defined as the line joining the Deakin Deek to the south and the East Pole at Surveyor General's Corner in the north.
 - Centroid of Serpentine Lakes Road derived from AUST 1:50,000 mapping based on 1984-85 aerial photography.



DELISSER DISTRICT



DISTRICT DELISSER MILYUGA YOWALGA		TOWNSHIP		FILE 302486	
SUBJECT TO SURVEY		DELISSER LOCATIONS 8 & 9, MILYUGA LOCATION 20 & YOWALGA LOCATION 7		SCALE 1:50,000 As shown on the plan	
SURVEYOR'S DECLARATION - Reg 21(1) of the Land Administration Act 1988: This plan is a correct representation of the survey as conducted in accordance with the provisions of the Act and this plan is to be used for the purposes of the Act and shall prevail over the original unless it is shown to be incorrect.		LOCAL AUTHORITY SOUTH AUSTRALIA PLANNING COMMISSION		APPROVED BY LEGAL COMMISSIONER	
SURVEYOR'S CERTIFICATE - Completed		SURVEY INDEX PLANS PAPER(S)		DATE OF VALIDATION LAA REG 21(1)	
FIELD BOOKS None		ACQUISITION FROM Original Survey		DATE OF VALIDATION LAA REG 21(1)	
PREPARED BY: G. CHALLEY		LEASER DATE		DATE OF VALIDATION LAA REG 21(1)	

LAND ADMINISTRATION ACT
EXAMPLE 69