



# Business Activity Profile

March 2017

## At a glance

The following table compares current month data with the previous month and the same time previous year.

Service/Product description	Comparison		
	Mar 2017	Feb 2017	Mar 2016
Total Document Lodgements	25,154	22,017 14.25%	25,930 2.99%
Transfer Lodgements	6,144	4,785 28.40%	5,861 4.83%
Mortgage Lodgements	6,669	5,709 16.82%	7,290 8.52%
Searches	133,182	117,451 13.39%	128,384 3.74%
Electronic Advice of Sale Lodgements	5,301	4,628 14.54%	5,274 0.51%
Subdivisional Lots Created	884	951 7.05%	1,383 36.08%
Strata Lots Created	952	928 2.59%	1,157 17.72%
New Lots Created	1,836	1,879 2.29%	2,540 27.72%
Strata Plan and Survey Strata Plan Lodgements	230	173 32.95%	219 5.02%



Landgate Senior Remote Sensing Officer Norm Santich receives the 2017 award for New Agricultural Release for Pastures from Space Plus.

### Pastures from Space Plus wins agricultural award

Landgate has won the Best New Agricultural Release Award at the 2017 Wagin Woolorama for its innovative online farm monitoring tool, Pastures from Space Plus.

Landgate Chief Executive Jodi Cant said Pastures from Space Plus gives farmers access to high resolution satellite imagery of their paddocks.

"This is only one of the features, farmers can also find more than a decade of historical pasture data and rainfall figures," Ms Cant said.

"This information can give farmers an edge when making important management decisions about feed budgeting, stocking rates and fertiliser application.

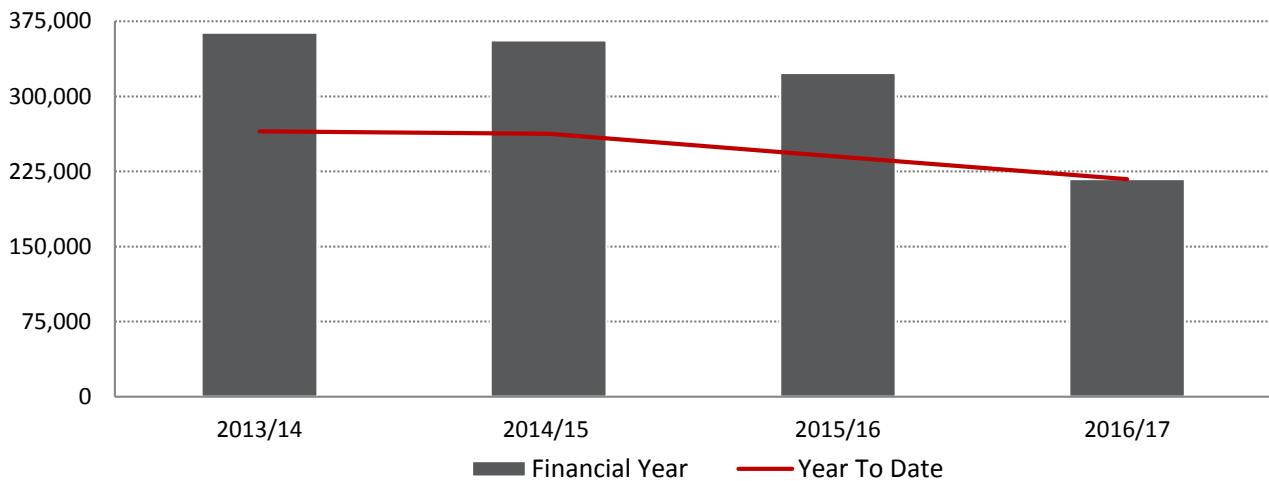
"We've had positive feedback from farmers and agronomists who say Pastures from Space Plus is taking the guesswork out of farming.

"Landgate has developed Pastures from Space Plus with farmers, for farmers and we are proud to receive recognition by the agricultural community at the 2017 Wagin Woolorama."

Pastures from Space Plus added some new features prior to Wagin Woolorama including multi-farm functionality. This allows farmers with more than one farm to add them all to their existing subscription, saving them time and money. Learn more about [Pastures from Space Plus](#).

## Total document lodgements, by financial year

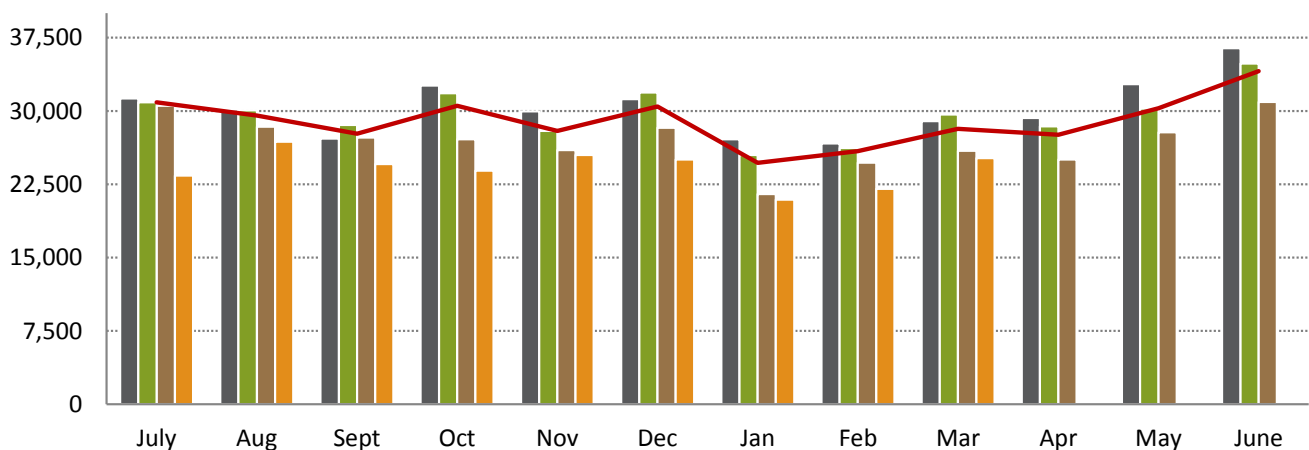
Total document lodgements 2016/17 year to date (217,290) reflect a 9.35% decrease when compared to the same time 2015/16 (239,697).



Financial Year	13/14	14/15	15/16	16/17
Total Lodgements July to June	363,477	356,010	323,474	
Total lodgements year to date	265,045	262,502	239,697	217,290

## Total document lodgements, by month

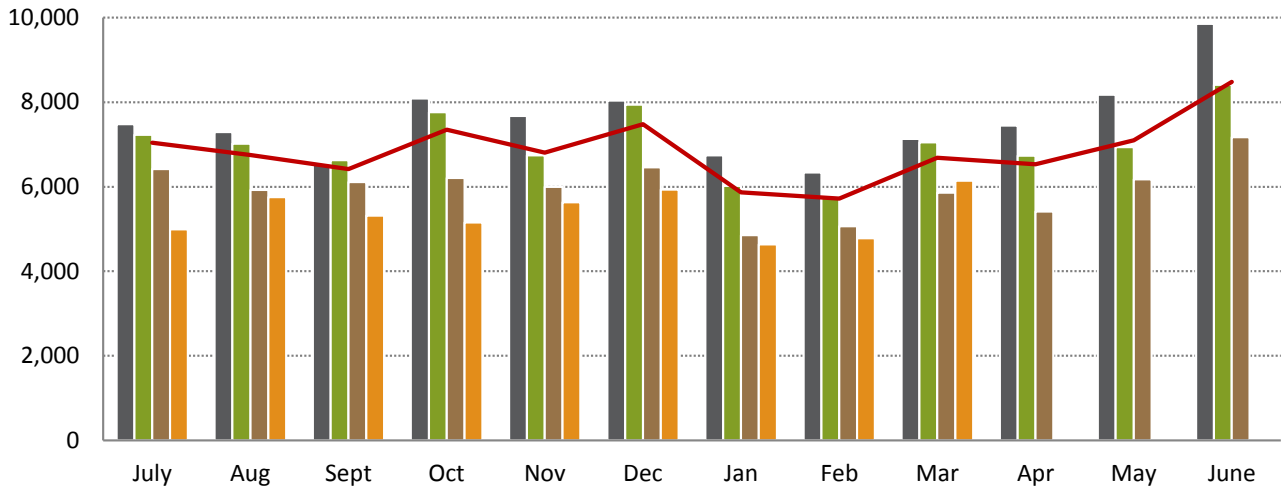
The number of documents lodged in March 2017 (25,154) increased 14.25% from the previous month (22,017) and decreased 2.99% from March 2016 (25,930).



	July	Aug	Sept	Oct	Nov	Dec	Jan	Feb	Mar	Apr	May	June
13/14	31,263	30,118	27,174	32,606	29,965	31,201	27,093	26,669	28,956	29,261	32,748	36,423
14/15	30,898	30,068	28,560	31,816	27,949	31,898	25,483	26,213	29,617	28,417	30,239	34,852
15/16	30,525	28,376	27,270	27,105	25,982	28,291	21,495	24,723	25,930	25,042	27,801	30,934
16/17	23,394	26,832	24,556	23,885	25,507	25,020	20,925	22,017	25,154			
3 Year Avg (13/14 - 15/16)	30,895	29,521	27,668	30,509	27,965	30,463	24,690	25,868	28,168	27,573	30,263	34,070

## Transfer lodgements, by month

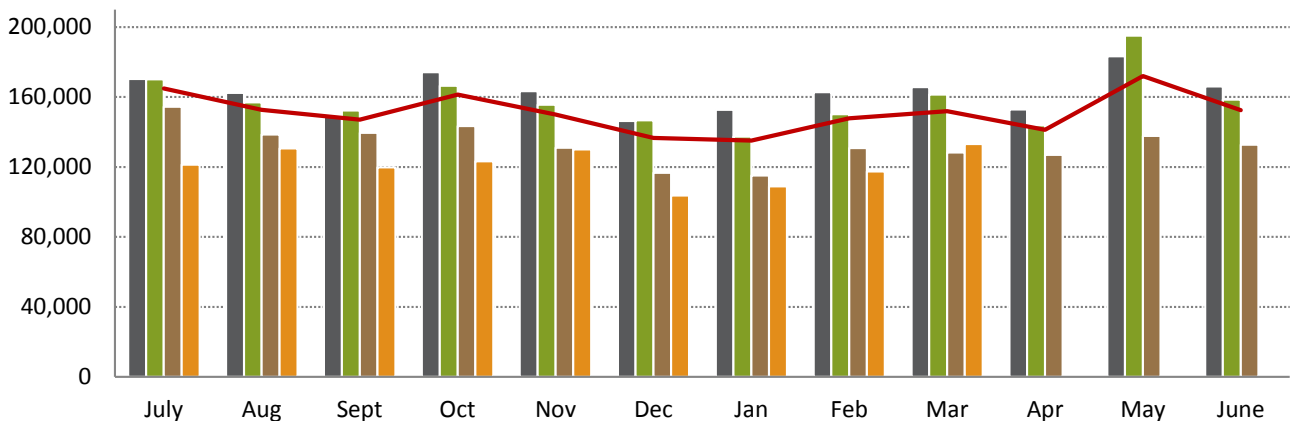
Transfer documents lodged in March 2017 (6,144) increased 28.40% from the previous month (4,785) and increased 4.83% from March 2016 (5,861). The number of mortgages lodged during March 2017 (6,669) increased 16.82% from the previous month (5,709) and decreased 8.52% from March 2016 (7,290).



	July	Aug	Sept	Oct	Nov	Dec	Jan	Feb	Mar	Apr	May	June
13/14	7,475	7,294	6,530	8,085	7,672	8,036	6,741	6,335	7,131	7,449	8,175	9,851
14/15	7,228	7,016	6,626	7,759	6,742	7,938	6,018	5,759	7,053	6,730	6,940	8,413
15/16	6,414	5,927	6,106	6,204	5,993	6,460	4,853	5,064	5,861	5,414	6,172	7,174
16/17	4,990	5,754	5,314	5,153	5,634	5,929	4,634	4,785	6,144			
3 Year Avg (13/14 - 15/16)	7,039	6,746	6,421	7,349	6,802	7,478	5,871	5,719	6,682	6,531	7,096	8,479

## Search activities, by month

The number of searches for March 2017 (133,182) increased 13.39% from the previous month (117,451) and increased 3.74% from March 2016 (128,384).

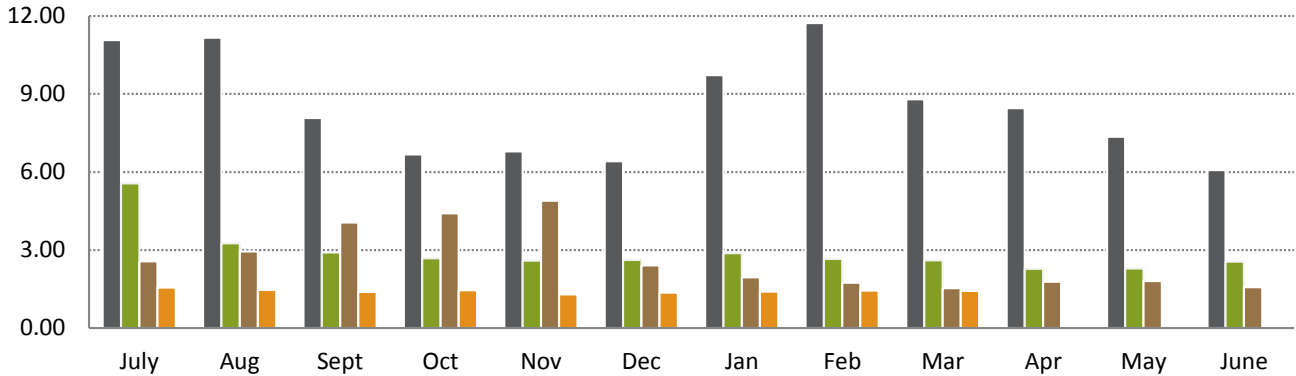


	July	Aug	Sept	Oct	Nov	Dec	Jan	Feb	Mar	Apr	May	June
13/14	170,374	162,359	149,405	174,207	163,439	146,356	152,792	162,818	165,751	152,837	183,237	166,079
14/15	170,172	156,893	152,229	166,408	155,655	146,637	137,368	150,146	161,484	143,831	195,083	158,516
15/16	154,413	138,603	139,497	143,355	131,093	116,599	115,180	130,809	128,384	127,037	137,730	132,768
16/17	121,355	130,631	119,837	123,182	130,069	103,667	109,018	117,451	133,182			
3 Year Avg (13/14 - 15/16)	164,986	152,618	147,044	161,323	150,062	136,531	135,113	147,924	151,873	141,235	172,017	152,454

## Time to register a transaction against a Certificate of Title, by month

Target: 75% of documents within 5.2 days

During March 2017 the average number of days to register a transaction against a Certificate of Title was 1.42 days, a decrease compared to the previous month (1.44 days).

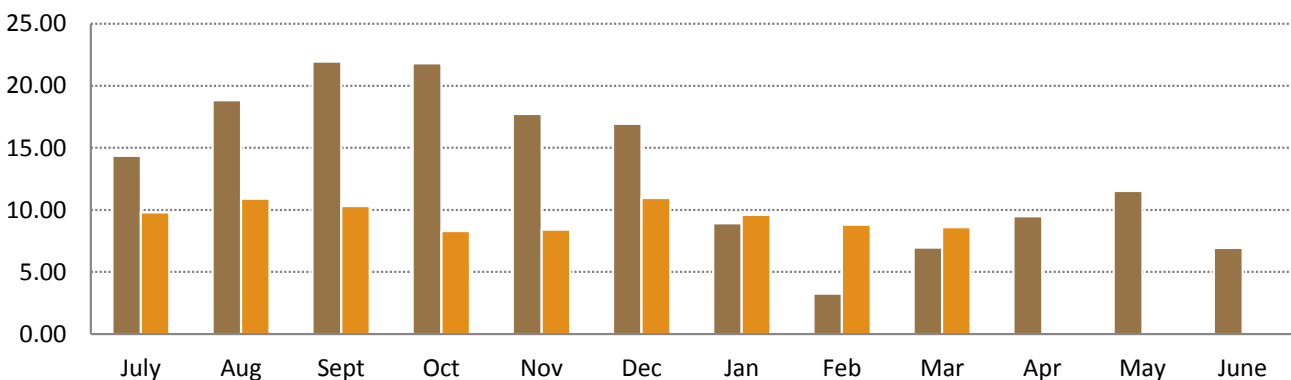


	July	Aug	Sept	Oct	Nov	Dec	Jan	Feb	Mar	Apr	May	June
13/14	11.08	11.16	8.08	6.68	6.79	6.41	9.73	11.73	8.80	8.45	7.35	6.07
14/15	5.56	3.26	2.90	2.68	2.59	2.62	2.88	2.66	2.61	2.28	2.29	2.55
15/16	2.57	2.95	4.06	4.41	4.90	2.41	1.95	1.74	1.53	1.78	1.80	1.57
16/17	1.56	1.46	1.39	1.45	1.30	1.36	1.40	1.44	1.42			

## Time to register a Certificate of Title for a freehold subdivisions, by month

Target: 10 days

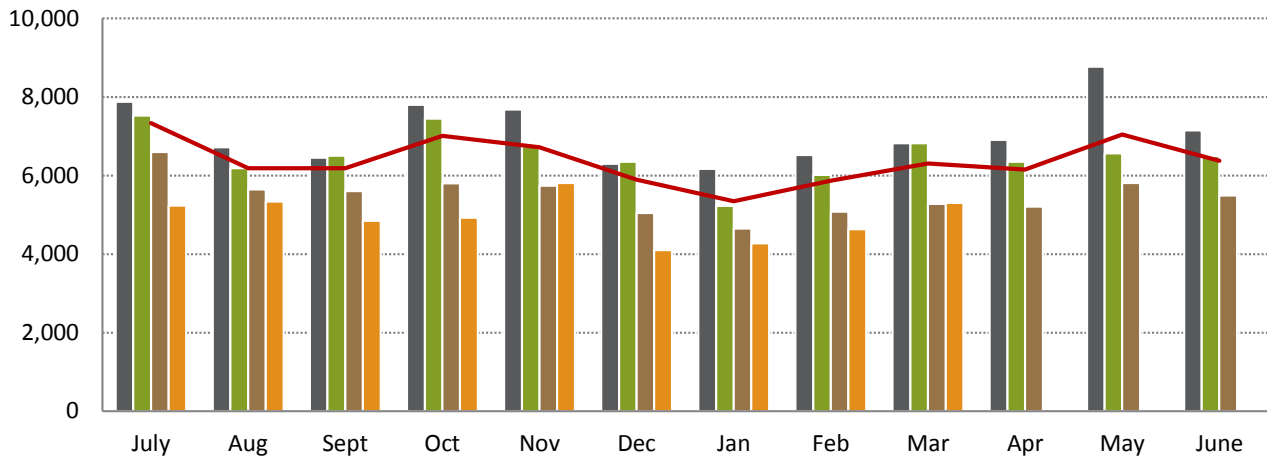
During March 2017 the average number of days to register a Certificate of Title for subdivisions was 8.60 days, a decrease compared to the previous month (8.80 days).



	July	Aug	Sept	Oct	Nov	Dec	Jan	Feb	Mar	Apr	May	June
15/16	14.36	18.84	21.95	21.80	17.72	16.95	8.91	3.25	6.98	9.50	11.52	6.94
16/17	9.80	10.90	10.30	8.30	8.40	10.95	9.60	8.80	8.60			

## Electronic Advice of Sale (EAS) lodgements, by month

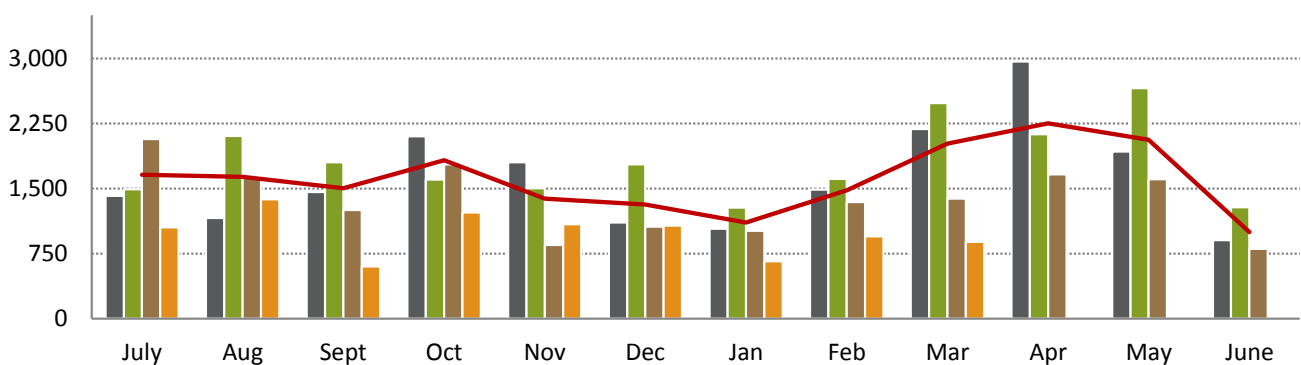
A total of 5,301 lodgements were registered during March 2017, a 14.54% increase from the previous month (4,628) and a 0.51% increase from March 2016 (5,274).



	July	Aug	Sept	Oct	Nov	Dec	Jan	Feb	Mar	Apr	May	June
13/14	7,877	6,720	6,448	7,797	7,678	6,296	6,165	6,522	6,817	6,905	8,767	7,149
14/15	7,524	6,184	6,507	7,443	6,743	6,345	5,220	6,015	6,821	6,345	6,565	6,491
15/16	6,599	5,643	5,602	5,799	5,743	5,045	4,649	5,078	5,274	5,208	5,810	5,493
16/17	5,236	5,332	4,850	4,921	5,805	4,096	4,274	4,628	5,301			
3 Year Avg (13/14 - 15/16)	7,333	6,182	6,186	7,013	6,721	5,895	5,345	5,872	6,304	6,153	7,047	6,378

## Number of subdivisional lots, by month

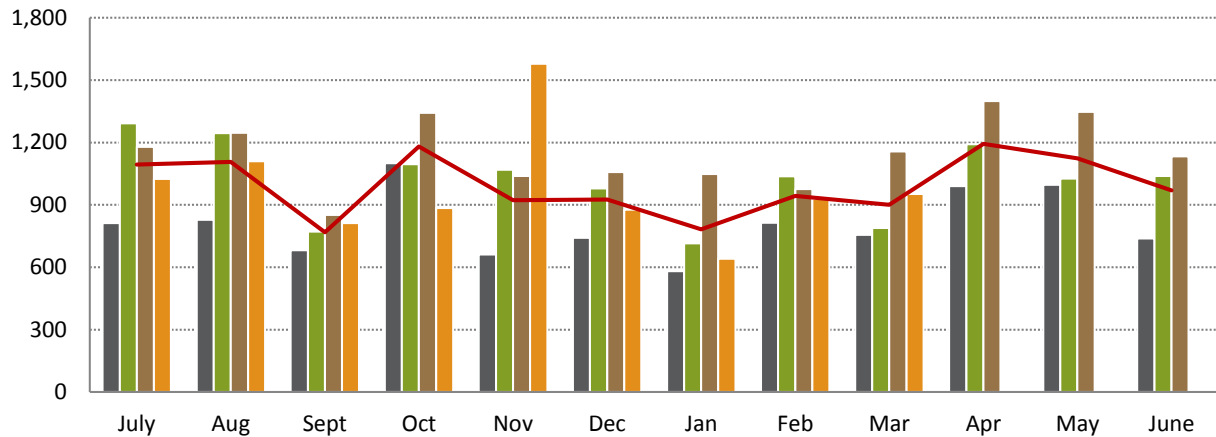
During March 2017, 884 sub-divisional lots were created, a 7.05% decrease from the previous month (951) and a 36.08% decrease from March 2016 (1,383).



	July	Aug	Sept	Oct	Nov	Dec	Jan	Feb	Mar	Apr	May	June
13/14	1,418	1,162	1,459	2,104	1,803	1,110	1,037	1,487	2,186	2,965	1,927	904
14/15	1,493	2,106	1,803	1,602	1,503	1,781	1,281	1,612	2,487	2,128	2,658	1,284
15/16	2,072	1,634	1,252	1,781	851	1,061	1,014	1,343	1,383	1,665	1,609	807
16/17	1,052	1,376	601	1,225	1,088	1,073	662	951	884			
3 Year Avg (13/14 - 15/16)	1,661	1,635	1,505	1,829	1,386	1,317	1,111	1,481	2,019	2,253	2,065	998

## Number of strata title lots, by month

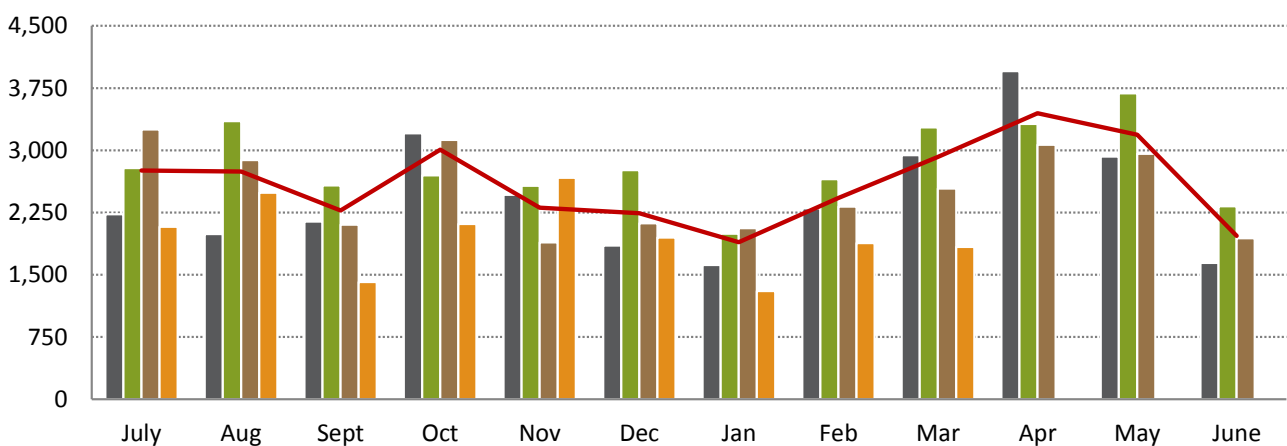
During March 2017, 230 strata plans were lodged creating 952 strata lots, a 2.59% increase from the previous month (928) and a 17.72% decrease from March 2016 (1,157).



	July	Aug	Sept	Oct	Nov	Dec	Jan	Feb	Mar	Apr	May	June
13/14	812	828	681	1,100	661	741	581	814	756	990	996	739
14/15	1,292	1,245	771	1,096	1,069	979	715	1,038	789	1,191	1,026	1,039
15/16	1,179	1,247	852	1,343	1,039	1,057	1,049	976	1,157	1,399	1,347	1,133
16/17	1,025	1,110	813	885	1,579	876	640	928	952			
3 Year Avg (13/14 - 15/16)	1,094	1,107	768	1,180	923	926	782	943	901	1,193	1,123	970

## Number of new lots, by month

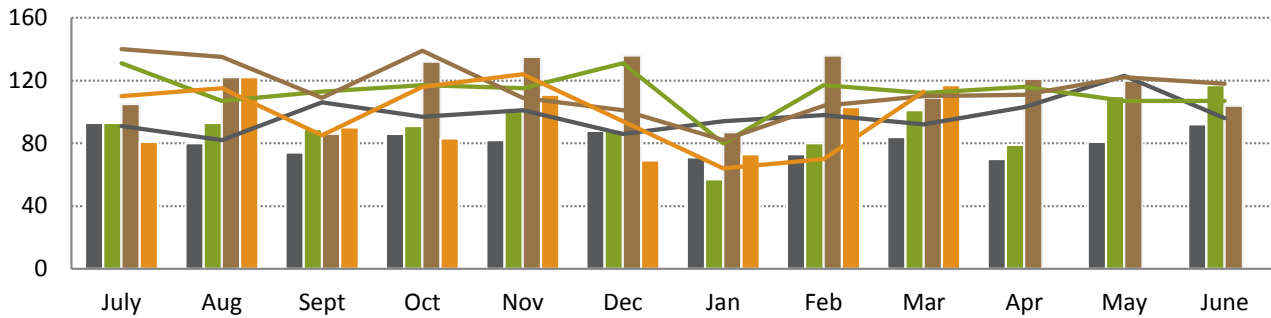
A total of 1,836 new lots were created during March 2017, a 2.29% decrease from the previous month (1,879) and a 27.72% decrease from March 2016 (2,540).



	July	Aug	Sept	Oct	Nov	Dec	Jan	Feb	Mar	Apr	May	June
13/14	2,230	1,990	2,140	3,204	2,464	1,851	1,618	2,301	2,942	3,955	2,923	1,643
14/15	2,785	3,351	2,574	2,698	2,572	2,760	1,996	2,650	3,276	3,319	3,684	2,323
15/16	3,251	2,881	2,104	3,124	1,890	2,118	2,063	2,319	2,540	3,064	2,956	1,940
16/17	2,077	2,486	1,414	2,110	2,667	1,949	1,302	1,879	1,836			
3 Year Avg (13/14 - 15/16)	2,755	2,741	2,273	3,009	2,309	2,243	1,892	2,423	2,919	3,446	3,188	1,969

## Strata Plans (SP) and Survey Strata Plans (SSP) lodged, by month

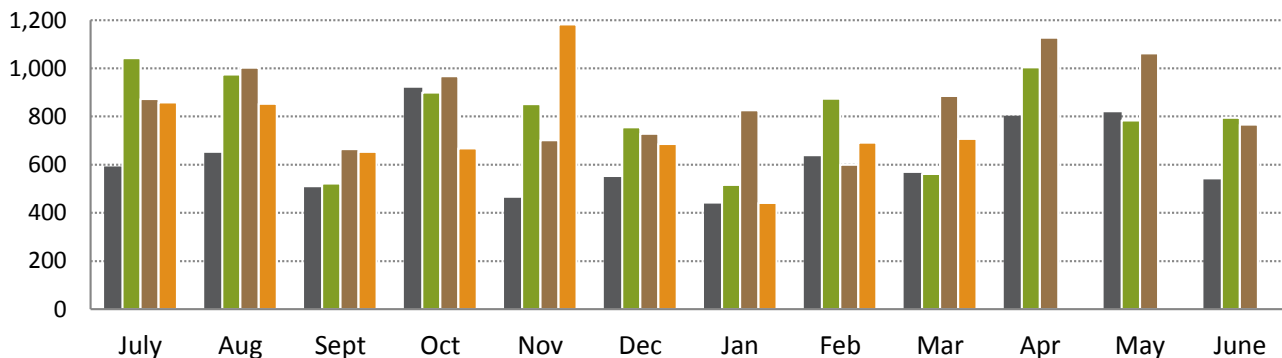
A total of 230 Strata Plans and Survey Strata Plans were lodged in March 2017, a 32.95% increase from the previous month (173) and a 5.02% increase from March 2016 (219).



	July	Aug	Sept	Oct	Nov	Dec	Jan	Feb	Mar	Apr	May	June
13/14 SP	93	80	74	86	82	88	71	73	84	70	81	92
13/14 SSP	91	82	106	97	101	86	94	98	92	103	123	96
14/15 SP	93	93	89	91	101	88	57	80	101	79	110	117
14/15 SSP	131	107	113	117	115	131	80	117	112	116	107	107
15/16 SP	105	122	86	132	135	136	87	136	109	121	120	104
15/16 SSP	140	135	109	139	109	101	82	104	110	111	122	118
16/17 SP	81	122	90	83	111	69	73	103	117			
16/17 SSP	110	115	85	116	124	94	64	70	113			

## Strata Plans (SP) and Survey Strata Plans (SSP) lots created requiring Western Australian Planning Commission (WAPC) approval, by month

A total of 707 lots were created requiring WAPC approval in March 2017, a 2.32% increase from the previous month (691) and a 20.20% decrease from March 2016 (886).



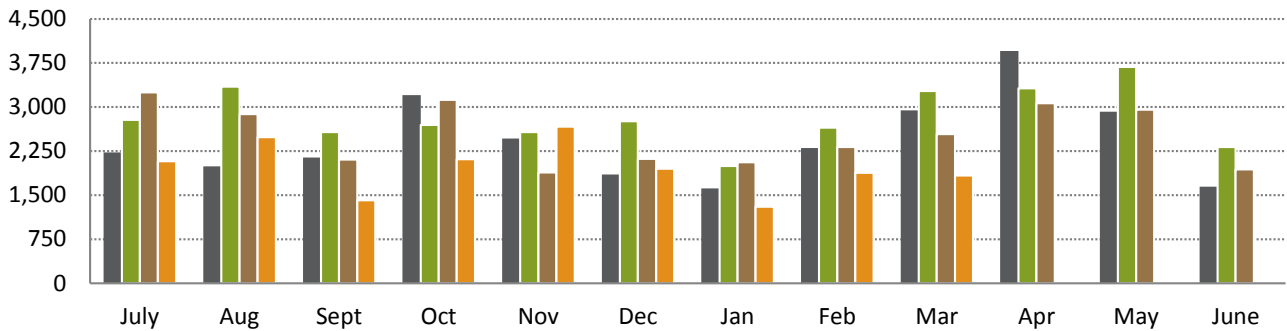
	July	Aug	Sept	Oct	Nov	Dec	Jan	Feb	Mar	Apr	May	June
13/14 WAPC	592	649	506	919	463	549	439	635	566	803	817	539
13/14 WAPC EX	220	179	175	181	198	192	142	179	190	187	179	200
14/15 WAPC	1,043	975	522	899	852	755	516	874	562	1,005	783	795
14/15 WAPC EX	249	270	249	197	217	224	199	164	227	186	243	244
15/16 WAPC	873	1,003	665	968	702	729	826	600	886	1,127	1,063	766
15/16 WAPC EX	306	244	187	375	337	328	223	376	271	272	284	367
16/17 WAPC	858	853	653	668	1,182	686	441	691	707			
16/17 WAPC EX	167	257	160	217	397	190	199	237	245			

Note: "EX" represents Exempt



## Strata Lots (SL) created as a % of all lots created, by month

A total of 1,836 lots were created in March 2017 of which 51.85% (952) were strata lots, a 2.59% increase from the previous month (928) and a 17.72% decrease compared to the same time previous year (1,157).



	July	Aug	Sept	Oct	Nov	Dec	Jan	Feb	Mar	Apr	May	June
13/14 All Lots	2,230	1,990	2,140	3,204	2,464	1,851	1,618	2,301	2,942	3,955	2,923	1,643
13/14 % SL	36.41	41.61	31.82	34.33	26.83	40.03	35.91	35.38	25.70	25.03	34.07	44.98
14/15 All Lots	2,785	3,351	2,574	2,698	2,572	2,760	1,996	2,650	3,276	3,319	3,684	2,323
14/15 % SL	46.39	37.15	29.95	40.62	41.56	35.47	35.82	39.17	24.08	35.88	27.85	44.73
15/16 All Lots	3,251	2,881	2,104	3,124	1,890	2,118	2,063	2,319	2,540	3,064	2,956	1,940
15/16 % SL	36.27	55.49	51.29	42.99	54.97	49.91	50.85	42.09	45.55	45.66	45.57	58.40
16/17 All Lots	2,077	2,486	1,414	2,110	2,667	1,949	1,302	1,879	1,836			
16/17 % SL	49.35	44.65	57.50	41.94	59.21	44.95	49.16	49.39	51.85			

### Disclaimer

To the extent permitted by law, the Western Australian Land Information Authority trading as Landgate will in no way be liable to you or anyone else for any loss, damage or costs however caused (including through negligence) which may be directly or indirectly suffered arising from the use of or reliance on any information or data (including incomplete, out of date, wrong, inaccurate or misleading information or data) whether expressed or implied in the Report.

The information contained in this Report is provided by Landgate in good faith on an "as is" basis. The information is believed to be accurate and current at the date the Report was created. However changes in circumstances may affect the accuracy and completeness of the information. Landgate makes no representation or warranty as to the reliability, accuracy or completeness, merchantability or fitness for purpose of the information contained in this Report. You should not act on the basis of anything contained in this Report without first obtaining specific professional advice. It is not intended to provide the basis for any evaluation, decision or forecasting. You must make your own assessment of it and rely on it wholly at your own risk. Where there is any concern about accuracy and currency of the information in the Report, reference should be made to Landgate for verification.

To the extent permitted by law, all representations, warranties and other terms are excluded and where they cannot be excluded, any liability suffered arising out of use of the Report is limited to resupply.

### Copyright

You may download and print the Report only for your personal and non-commercial use or use within your organisation for internal purposes, unless you have prior written approval.

Other than for the purposes of and subject to the conditions prescribed under the Copyright Act, you may not, in any form or by any means without Landgate's prior written permission

- adapt, reproduce, store, distribute, transmit, print, display, perform, publish or create derivative works from any part of the Report; or
- commercialise any information, products or services obtained from any part of the Report.

Requests to use copyright material should be addressed to Landgate, PO Box 2222, Midland WA 6036. Telephone +61 (0)8 9273 7373 or email: [customerservice@landgate.wa.gov.au](mailto:customerservice@landgate.wa.gov.au).

Any authorised reproduction however altered, reformatted or redisplayed must acknowledge the source of the information and that Landgate is the owner of copyright.